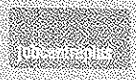


Southwark Local Authority Area Labour Market Bulletin January 2012



Prepared by Jobcentre Plus, South London District Office

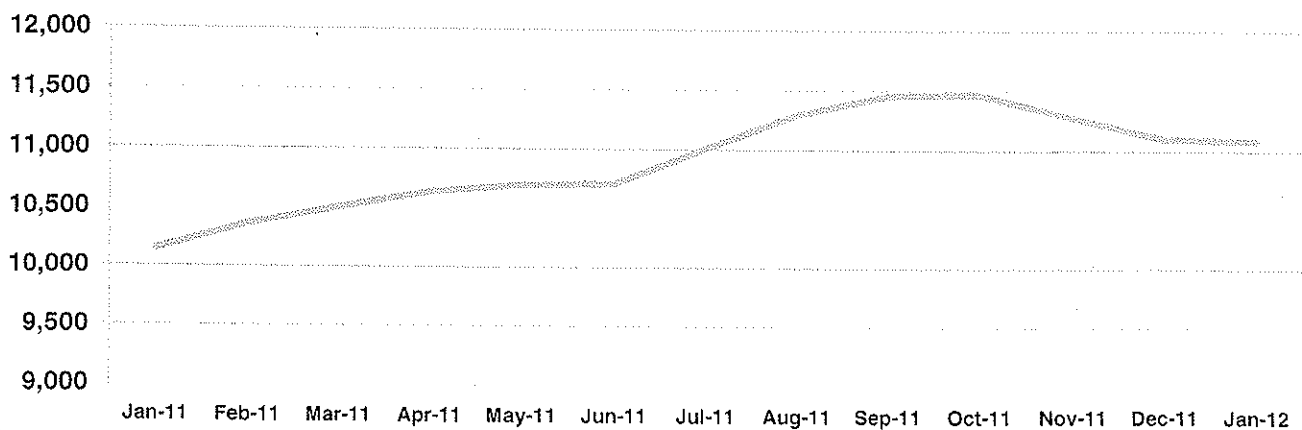
London Borough of Southwark Information

- The total population is 287,000
- The working age population is 211,400 (73.7% of the population)
- The overall employment rate is 68.9%

JSA Claimant Count – London Borough of Southwark

- The January 2012 JSA Count is 11,085
- A decrease of 15 (-0.1%) on last month.
- An increase of 940 (9.3%) on a year earlier.
- The JSA claimant count is 5.2% of the working age population.

JSA Count - London Borough of Southwark

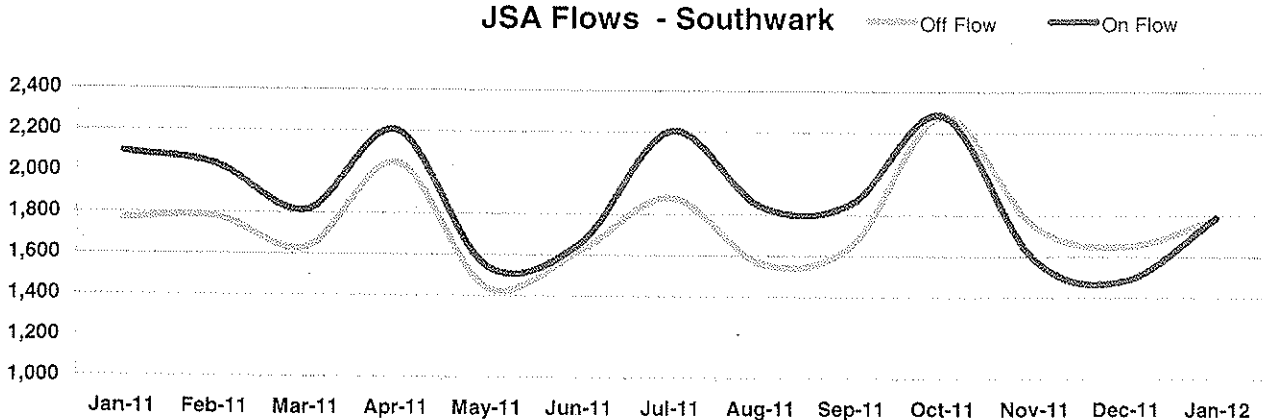


JSA Claimant flows

- The On-flow in January 2012 was 785.
- Compared to a year ago, On-flow has fallen by 14.6%.
- Off-flow at 1,785 is 0.8% higher than a year ago.

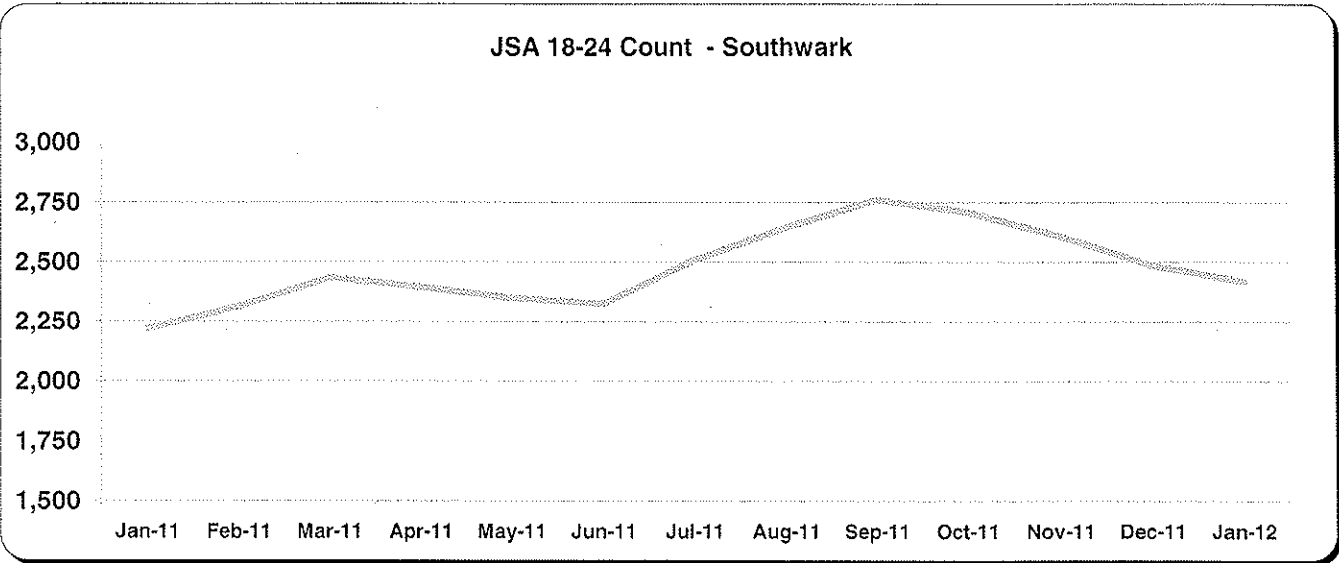
*on flow - new sign on's
off flow - off benefits*

JSA Flows - Southwark



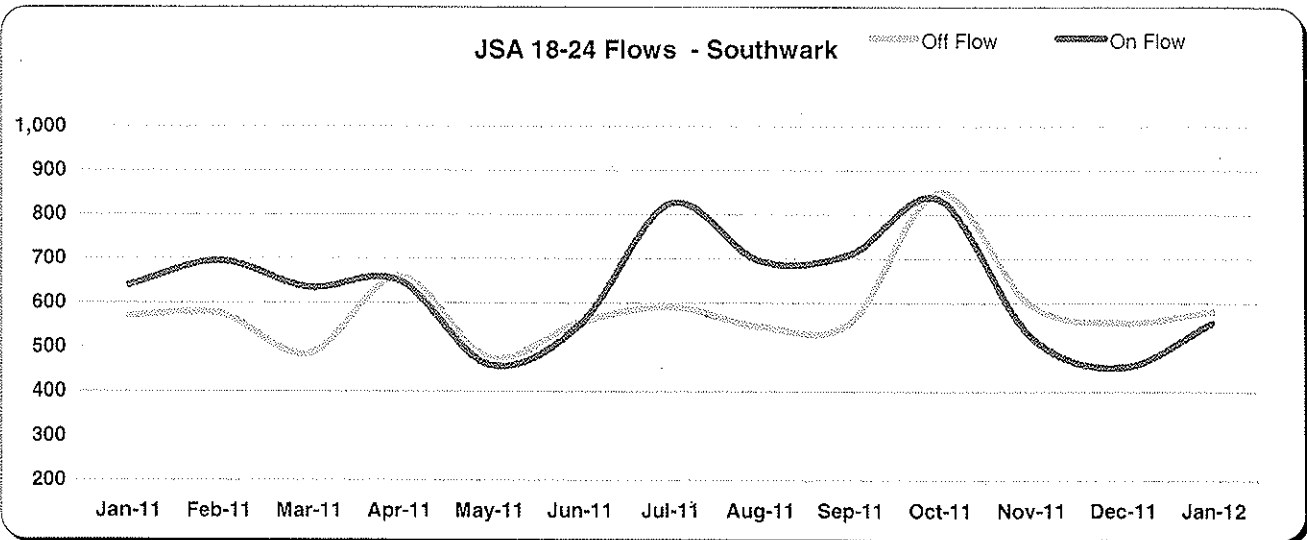
JSA Claimant Count - 18 to 24 year olds

- The January 2012 JSA Count of 18 -24 year olds is 2,420
- A decrease of 65 (-2.6%) on last month.
- An increase of 200 (9.0%) on a year earlier.



JSA Claimant flows (18 - 24 year olds)

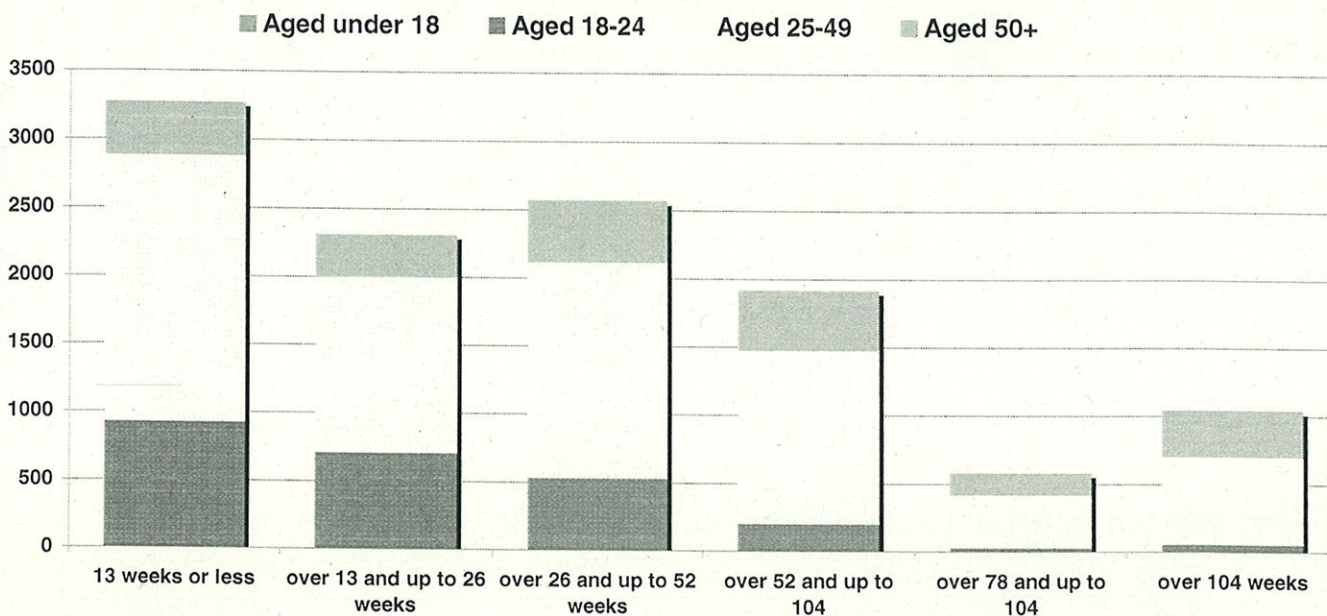
- The 18-24 On-flow in January 2012 was 555.
- Compared to a year ago, 18-24 On-flow has fallen by 13.3%.
- 18-24 Off-flow at 580 is 1.8% higher than a year ago.



JSA Count by age and duration

- 21.8% of claimants are 18 – 24 (2,415).
- 60.9% of claimants are 25 – 49 (6,755).
- 17.4% of claimants are aged 50 or more (1,930).
- 50.3% of claimants have been registered less than six months (5,580).
- 23.1% of claimants have been registered between six and twelve months (2,565).
- 26.7% of claimants have been registered for one year or more (2,955).

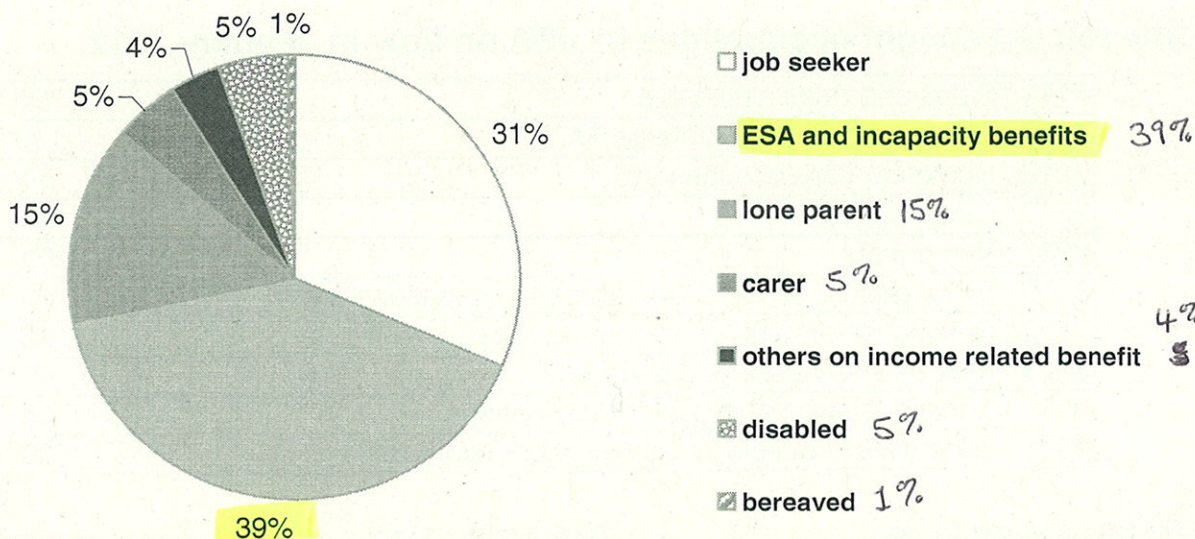
JSA Count by Age & Duration Borough of Southwark



Other Benefits

- As of May 2011, 13,440 people were claiming Employment Support Allowance and Incapacity Benefit.
- 4,870 LPs were claiming Income Support.

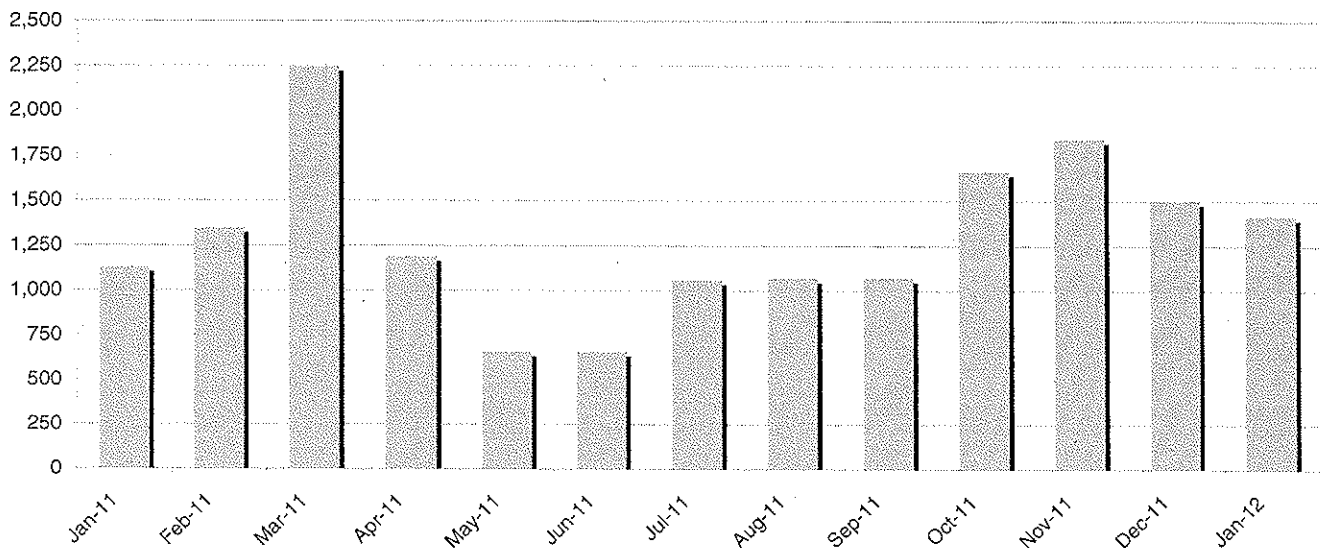
Welfare Benefit Customers. Borough of Southwark



Vacancies notified

- In January 2012, 1,417 vacancies were notified. This compares with 1,500 in December 2011 (down 5.5%) and 1,128 in January 2011 (up 25.6%).

Notified Vacancies / Southwark



The top ten notified vacancies by occupation in January 2012

7129 : Sales related occupations n.e.c.	142
3542 : Sales representatives	126
8212 : Van drivers	118
6115 : Care assistants and home carers	96
3211 : Nurses	94
4217 : Typists	50
7111 : Sales and retail assistants	47
9241 : Security guards and related occupations	47
9224 : Waiters, waitresses	47
7121 : Collector salespersons and credit agents	46

The top ten sought occupations by JSA on flow in January 2012

7111 : Sales and retail assistants	390
4150 : General office assistants/clerks	120
7212 : Customer care occupations	55
9233 : Cleaners, domestics	55
8212 : Van drivers	50
9149 : Other goods handling and storage occupations n.e.c.	50
7112 : Retail cashiers and check-out operators	45
9223 : Kitchen and catering assistants	40
9241 : Security guards and related occupations	35
9121 : Labourers in building and woodworking trades	30

JSA Claimant Count, Local Authority Comparison

Local Authority	Jan-11	Jan-12	% Change
Barking and Dagenham	6,570	7,475	13.8%
Barnet	6,435	7,020	9.1%
Bexley	4,335	4,810	11.0%
Brent	8,955	9,730	8.7%
Bromley	5,280	6,145	16.4%
Camden	5,390	5,565	3.2%
City of London	135	120	-11.1%
Croydon	9,540	10,920	14.5%
Ealing	8,305	9,125	9.9%
Enfield	9,315	10,535	13.1%
Greenwich	7,300	8,210	12.5%
Hackney	10,090	10,940	8.4%
Hammersmith and Fulham	5,025	5,105	1.6%
Haringey	9,895	10,410	5.2%
Harrow	3,905	4,245	8.7%
Havering	4,980	5,620	12.9%
Hillingdon	4,930	5,345	8.4%
Hounslow	4,910	5,220	6.3%
Islington	7,045	7,265	3.1%
Kensington and Chelsea	3,485	3,240	-7.0%
Kingston upon Thames	1,955	2,055	5.1%
Lambeth	11,110	12,160	9.5%
Lewisham	9,470	10,765	13.7%
Merton	3,435	4,040	17.6%
Newham	10,355	11,595	12.0%
Redbridge	6,505	7,200	10.7%
Richmond upon Thames	2,005	2,020	0.7%
Southwark	10,145	11,085	9.3%
Sutton	3,270	3,660	11.9%
Tower Hamlets	10,090	11,120	10.2%
Waltham Forest	8,475	9,910	16.9%
Wandsworth	6,175	6,595	6.8%
Westminster	5,065	5,280	4.2%
Column Total	213,870	234,535	9.7%